



139/635 Gardeners Road Mascot, NSW



Comfort and convenience

(Enter Building C. Not on Gardeners Rd)

A very spacious split level and comfortable north facing two-bedroom apartment. Easy walking distance to Mascot's train station. A very large dining and living area combined with a north facing aspect welcoming in abundant natural light. On your door step is Mascot train station, Woolworths supermarket as well as a large number of cafes and restaurants. Close to the CBD as well as quality on-site amenities make this apartment perfect for the professional couple or investor.

Features: -

- Very high quality Brazilian Teak floorboards
- Double height ceiling in living room
- North facing balcony
- Reverse cycle air-conditioning

Price: For Sale

Council Rates: \$268.00 p/q

Water Rates: \$183.00 p/q

Strata Rates: \$1,258.00 p/q



Simon Scammell

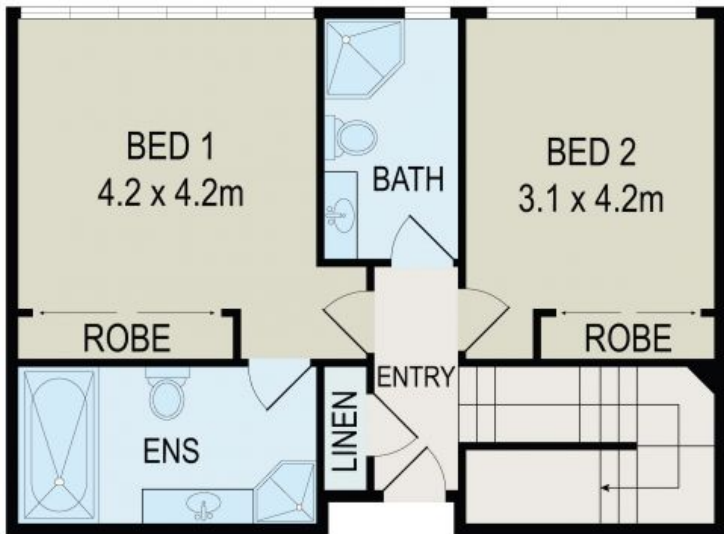
0405 556 140



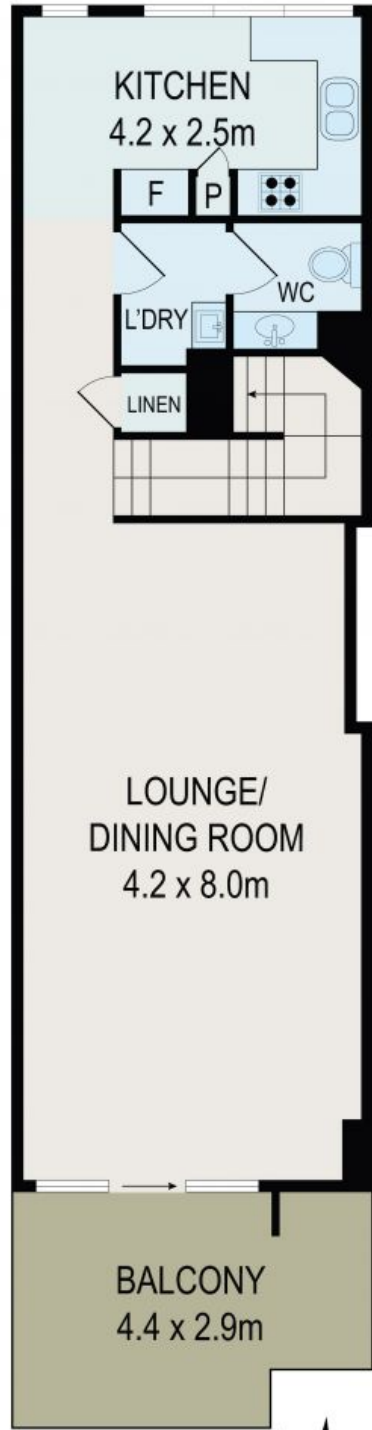
Peter Grant

0415 907 187

STORAGE
2.4 x 1.4m



LOWER LEVEL



UPPER LEVEL



All information contained herein is gathered from all sources we believe to be reliable. However we cannot guarantee its accuracy and interested parties should rely on their own enquiries.

