



64-68 Shepherd Street Marrickville, NSW

WAREHOUSE - SALE LEASE

The future of Marrickville is looking bright. One of the most sought after suburbs in Sydney. Gentrification of this once exclusive commercial neighbourhood (that is itching to be rezoned) in the future seems inevitable. A strategic purchase today, invest or work and reap the future rewards of a sizeable block in a tightly held neighbourhood.

Situated on an large land holding with a 27m street frontage, 64-68 Shepherd Street presents a unique opportunity for a purchaser or tenant to significantly expose and grow their business.

Total building area of 1,000-1,667m?
 5 x on-grade roller doors
 8-12 x on-grade car parking spaces

Price: \$7,000,000

Council Rates: \$0.00 p/q

Water Rates: \$0.00 p/q

Strata Rates: \$0.00 p/q



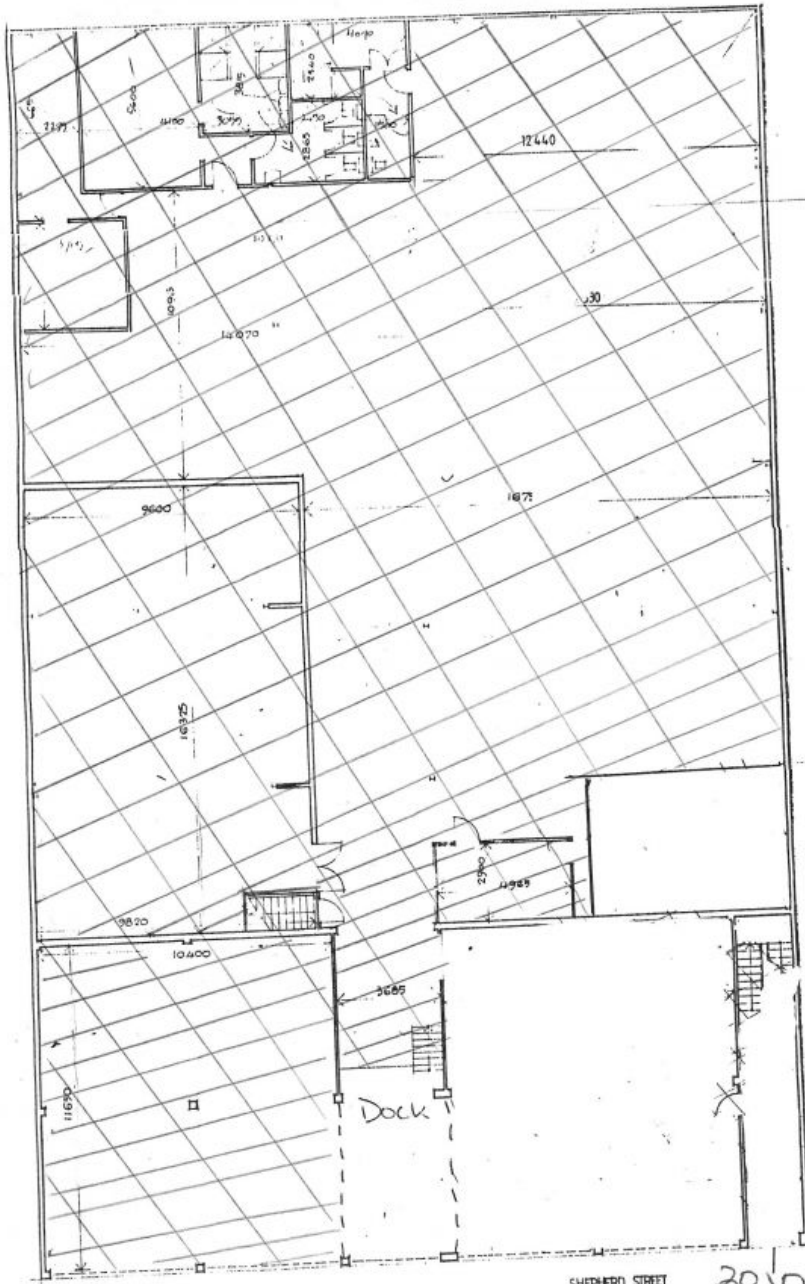
Terry Topouzakis

0410 690 418



Terry Topouzakis

0410 690 418



GROUND FLOOR PLAN Scale 1/100

FRONT

SHEPHERD STREET

2010